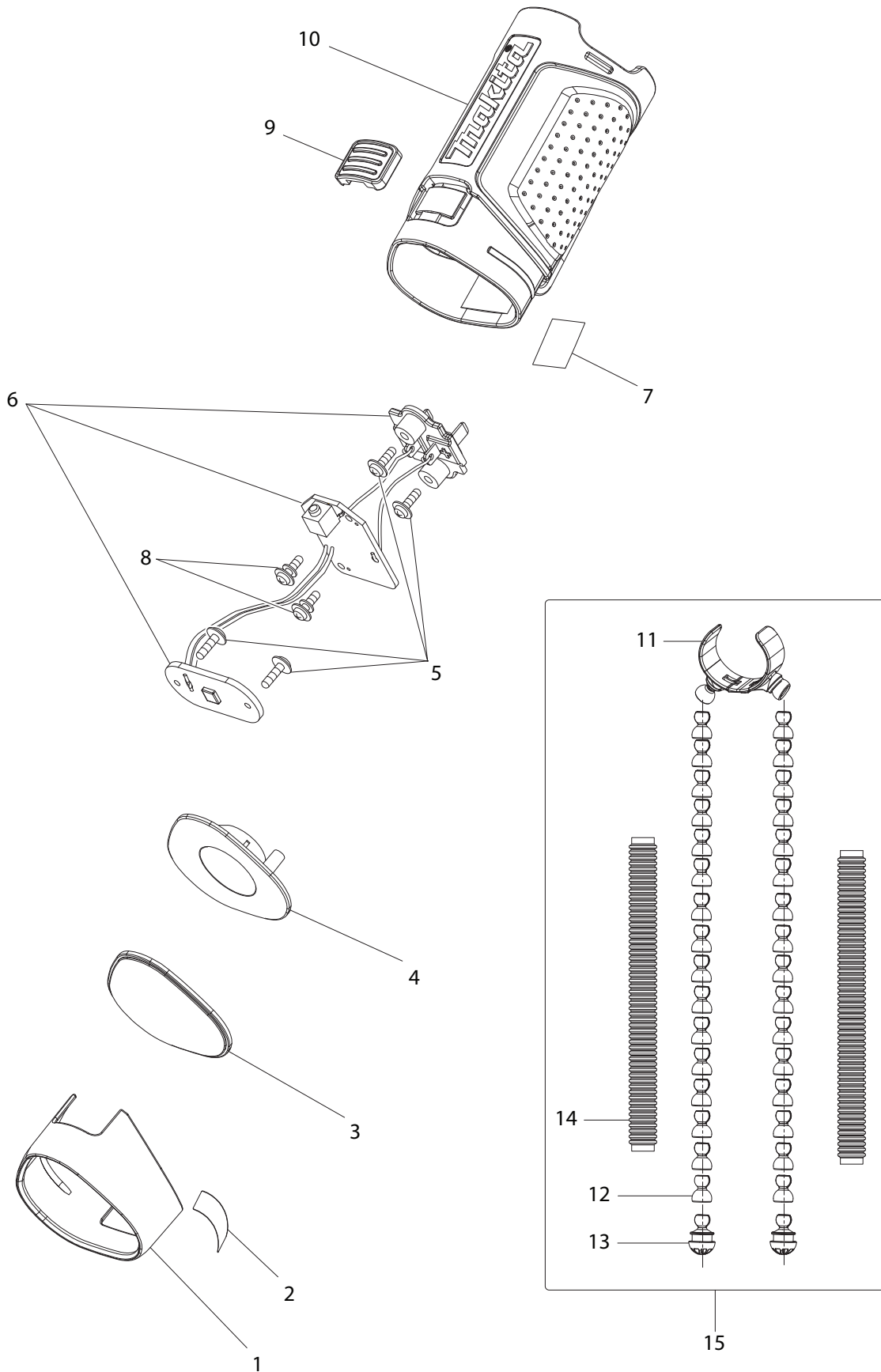




11 - 2010

ML101

10.8V HUG LIGHT with FLEXIBLE LEG



Item No.	Part No.	Description	Qty	Unit	
1	GM00001146	HEAD COVER (BLUE)	1	PC.	
2	GM00001156	LASER LABEL	1	PC.	
3	GM00001145	LENS	1	PC.	
4	GM00001144	REFLECTOR	1	PC.	
5	GM00001143	TAPPING SCREW 2.3X6 BB	4	PC.	
6	1	GM00001142	CIRCUIT BOARD ASSY	1	PC.
	2	GM00001196	CIRCUIT BOARD ASSY	1	PC.
	3	GM00001243	CIRCUIT BOARD ASSY	1	PC.
7	GM00001149	NAME PLATE ML101	1	PC.	
8	GM00001141	TAPPING SCREW 2.3X6	2	PC.	
9	GM00001140	SWITCH COVER	1	PC.	
10	GM00001138	MAIN HOUSING ASSY BLUE	1	PC.	
11	GM00001124	JOINT BASE ASSY	1	PC.	
12	GM00001122	JOINT	30	PC.	
13	GM00001121	JOINT END CAP	2	PC.	
14	GM00001125	SLEEVE	2	PC.	
15	GM00001157	LEG ASSY	1	PC.	
	INC.	Item No. 11- 14			

ACCESSORIES

A01	194551-4	10.8V LI-ION BATTERY BL1013	1	PC.
A02	DC10WB	CHARGER F/LI-ION 7.2,10.8,12V	1	PC.