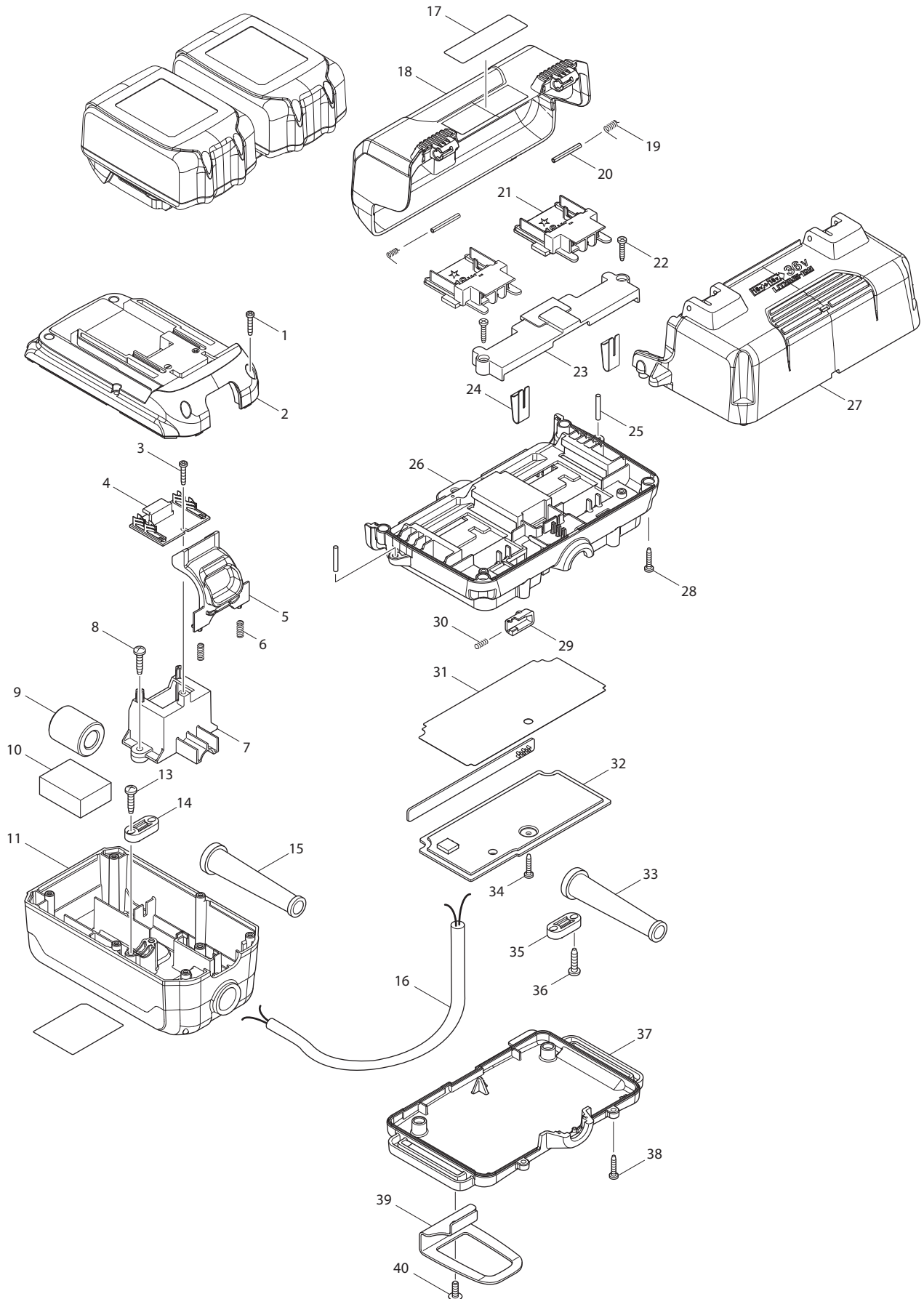




01 - 2011

195512-7

BATTERY CONVERTER BCV01 (18 > 36V)



Item No	Type	Ref	Part No	Description	Qty	Unit
1			266277-9	TAPPING SCREW TORX 3X16	6	PC.
2			452190-9	OUTER CASE (UPPER)	1	PC.
3			266277-9	TAPPING SCREW TORX 3X16	1	PC.
4			631879-4	TERMINAL BOARD COMPLETE	1	PC.
5			140100-5	HOOK COMPLETE	1	PC.
6			234120-0	COMPRESSION SPRING 4	2	PC.
7			451260-1	INNER SUPPORT	1	PC.
8			266326-2	TAPPING SCREW 4X18	2	PC.
9			688140-0	LINE FILTER	1	PC.
10			685718-0	SPONGE SHEET	1	PC.
11			451256-2	OUTER CASE (UNDER)	1	PC.
13			266326-2	TAPPING SCREW 4X18	2	PC.
14			687140-7	STRAIN RELIEF	1	PC.
15			682504-0	CORD GUARD 10-85	1	PC.
16			660280-6	POWER SUPPLY CORD	1	PC.
17			819285-5	MAKITA LOGO LABEL	1	PC.
18			187082-0	BATTERY COVER SET	1	PC.
		INC.	892538-7	CAUTION LABEL (EN/FR/SP)	1	PC.
		INC.		Item No. 17		
19			233584-5	TORSION SPRING 4	2	PC.
20			951075-1	SPRING PIN 3-28	2	PC.
21	1		643860-3	TERMINAL	2	PC.
	2		643888-1	TERMINAL - N/A	2	PC.
	3		643899-6	TERMINAL	2	PC.
22			266130-9	TAPPING SCREW BIND PT 3X16	2	PC.
23			452636-5	TERMINAL HOLDER	1	PC.
24			232267-4	LEAF SPRING	2	PC.
25			256158-5	PIN 3	2	PC.
26	1		140862-5	CENTER CASE COMPLETE	1	PC.
	2		141294-9	CENTER CASE COMPLETE	1	PC.
27			452635-7	UNDER COVER	1	PC.
28			266130-9	TAPPING SCREW BIND PT 3X16	4	PC.
29			452637-3	SLIDE LATCH	1	PC.
30			231293-0	COMPRESSION SPRING 3	1	PC.
31			452725-6	PROTECTION PLATE	1	PC.
32			620047-4	ADAPTER CIRCUIT	1	PC.
33			682504-0	CORD GUARD 10-85	1	PC.
34			266130-9	TAPPING SCREW BIND PT 3X16	1	PC.
35			687140-7	STRAIN RELIEF	1	PC.
36			266326-2	TAPPING SCREW 4X18	2	PC.
37			452633-1	TOP COVER	1	PC.
38			266130-9	TAPPING SCREW BIND PT 3X16	4	PC.
39			346401-1	HOOK	1	PC.
40			266622-8	+ TRUSS HEAD SCREW M4X12	1	PC.
C01			872280-6	CARTON	1	PC.
D01			654509-0	CONNECTOR 2-SD	1	PC.
D02			654510-5	INSULATED CONNECTOR 5.5-SD	5	PC.

ACCESSORIES

A02 ----- [18V LI-ION BATTERY](#)

*BL1815 cannot be used with BCV01 (T/I# 92166, 93560)