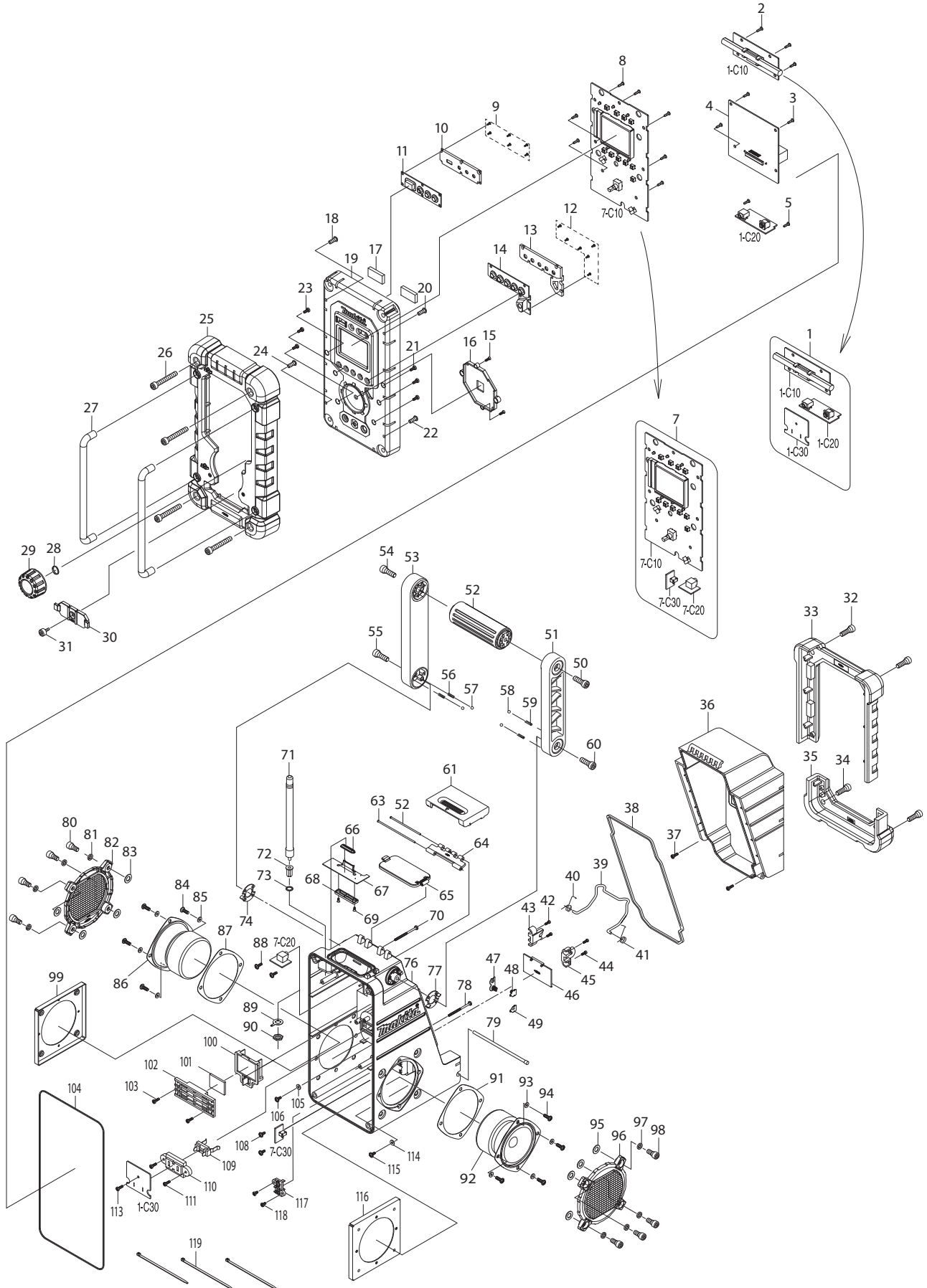




06 - 2012
LXRM03B
AM/FM JOB SITE RADIO W/ I-POD DOCKING



Item No.	Part No.	Description	Qty	Unit
1		SE00000213	1	PC.
	C10	SE00000214	1	PC.
	C20	SE00000215	1	PC.
	C30	SE00000216	1	PC.
2		SE00000193	3	PC.
3		SE09163102	3	PC.
4		SE00000217	1	PC.
5		SE00000193	2	PC.
7		SE00000222	1	PC.
	C10	SE00000223	1	PC.
	C20	SE00000220	1	PC.
	C30	SE00000221	1	PC.
8		SE09163102	7	PC.
9		SE09090011	6	PC.
10		SE00000234	1	PC.
11		SE00000235	1	PC.
12		SE09090011	6	PC.
13		SE00000236	1	PC.
14		SE00000237	1	PC.
15		SE00000238	2	PC.
16		SE00000239	1	PC.
17		SE00000240	2	PC.
18		SE09064161	1	PC.
19		SE00000241	1	PC.
20		SE09064161	1	PC.
21		SE09163102	3	PC.
22		SE09064161	1	PC.
23		SE09163102	3	PC.
24		SE09064161	1	PC.
25		SE00000242	1	PC.
26		SE00000160	4	PC.
27		SE0338PC5Z	2	PC.
28		SE21B1110A	1	PC.
29		SE00000243	1	PC.
30		SE00000244	1	PC.
31		SE09173106	1	PC.
32		SE09176166	2	PC.
33		SE00000162	1	PC.
34		SE09176166	2	PC.
35		SE00000165	1	PC.
36		SE00000245	1	PC.
37		SE09163102	2	PC.
38		SE00000168	1	PC.
39		SE00000169	1	PC.
40		SE00000170	1	PC.
41		SE00000171	1	PC.
42		SE09163102	2	PC.
43		SE00000246	1	PC.
44		SE09163102	2	PC.
45		SE00000247	1	PC.
46		SE00000248	1	PC.
47		SE021E9030	1	PC.
48		SE021E9020	1	PC.
49		SE021E9010	1	PC.
50		SE00000176	1	PC.
51		SE00000249	1	PC.
52		SE00000179	1	PC.

Item No.	Part No.	Description	Qty	Unit
53	SE00000250	HANDLE HOLDER(L)	1	PC.
54	SE00000176	SCREW PTHE6X20(CR)	1	PC.
55	SE09176166	HEX SCREW M6X16	1	PC.
56	SE00000184	SPRING	2	PC.
57	SE09994007	STEEL BALL	2	PC.
58	SE09994007	STEEL BALL	2	PC.
59	SE00000184	SPRING	2	PC.
60	SE09176166	HEX SCREW M6X16	1	PC.
61	SE00000190	BATTERY COVER LOCKER	1	PC.
62	SE021PC050	LOCKER FIXER PIN 63.8	1	PC.
63	SE021PC040	LOCKER FIXER PIN 79.5	1	PC.
64	SE00000067	LOCKER HINGER	1	PC.
65	SE00000251	CRADLE COVER	1	PC.
66	SE00000252	IPOD CONNECTOR SLEEVE	1	PC.
67	SE00000253	CIRCUIT BOARD G IPOD ASS'Y	1	PC.
68	SE00000254	PCB G HOLDER	1	PC.
69	SE00000255	SCREW M2	2	PC.
70	SE09163452	SCREW M3X45	1	PC.
71	SE00000191	ROD ANT (BLK)	1	PC.
72	SE021J9032	ROD ANT HOLDER	1	PC.
73	SE024J9050	PACKING	1	PC.
74	SE00000192	HANDLE SUS-PLATE(L)	1	PC.
76	SE00000258	REAR CABINET ASS'Y	1	PC.
77	SE00000187	HANDLE SUS-PLATE (R)	1	PC.
78	SE09163452	SCREW M3X45	1	PC.
79	SE021PC030	BATTERY COVER LOCKER	1	PC.
80	SE9076146A	HEX SCREW M6X14	4	PC.
81	SE024J9040	PACKING	4	PC.
82	SE00000259	SPEAKER NET ASS'Y	1	PC.
83	SE024J9090	PACKING	4	PC.
84	SE09090023	SCREW M4X12	4	PC.
85	SE024J9070	PACKING	4	PC.
86	SE01620771	SPEAKER	1	PC.
87	SE024J9030	PACKING	1	PC.
88	SE00000193	SCREW 3X10	2	PC.
89	SE021PC100	ROD ANT TERMINAL	1	PC.
90	SE021P0020	NUT	1	PC.
91	SE024J9030	PACKING	1	PC.
92	SE01620771	SPEAKER	1	PC.
93	SE024J9070	PACKING	4	PC.
94	SE09090023	SCREW M4X12	4	PC.
95	SE024J9090	PACKING	4	PC.
96	SE00000259	SPEAKER NET ASS'Y	1	PC.
97	SE024J9040	PACKING	4	PC.
98	SE9076146A	HEX SCREW M6X14	4	PC.
99	SE021J9010	SPEAKER HOLDER	1	PC.
100	SE00000261	TERMINAL	1	PC.
101	SE023PC000	SPACER	1	PC.
102	SE020PC050	SLIDE BATTERY HOLDER	1	PC.
103	SE09163102	SCREW M3X10	2	PC.
104	SE024PC040	PACKING	1	PC.
105	SE00000199	SILICON RUBBER WASHER	1	PC.
106	SE00000193	SCREW 3X10	1	PC.
108	SE00000193	SCREW 3X10	2	PC.
109	SE00000262	BATTERY HOLDER	1	PC.
110	SE020PC040	CLUSTER BATTERY HOLDER	1	PC.
111	SE09163102	SCREW M3X10	2	PC.

Item No.	Part No.	Description	Qty	Unit
113	SE09163102	SCREW M3X10	1	PC.
114	SE00000199	SILICON RUBBER WASHER	1	PC.
115	SE00000193	SCREW 3X10	1	PC.
116	SE021J9010	SPEAKER HOLDER	1	PC.
117	SE00000200	TERMINAL C	1	PC.
118	SE09163062	SCREW M3X6	2	PC.
119	SE00000195	W/TIES 100MM	2	PC.

ACCESSORIES

A01	SE00000104	AC ADAPTER	1	PC.
-----	------------	------------	---	-----

* USABLE MAKITA BATTERIES
 Li-ion 7.2V-18V (BL7010, BL1013, BL1014, BL1415, BL1430, BL1815, BL1830)
 Ni-MH 9.6V-18V (1234, 1235, 1434, 1435, 1834, 1835, 9134, 9135, BH1220C, BH1223C, BH9020, BH9033)
 Ni-Cad 9.6V-18V (1202, 1220, 1222, 1420, 1422, 1822, 9100, 9120, 9122, PA09, PA12, PA14, PA18)

** RELATED CHARGERS
 DC7112, DC7020, DC07SA, DC10WB, DC1414, DC18RA, DC18SD, DC18SE
 DC1822, DC1804, DC1850, DC24SC