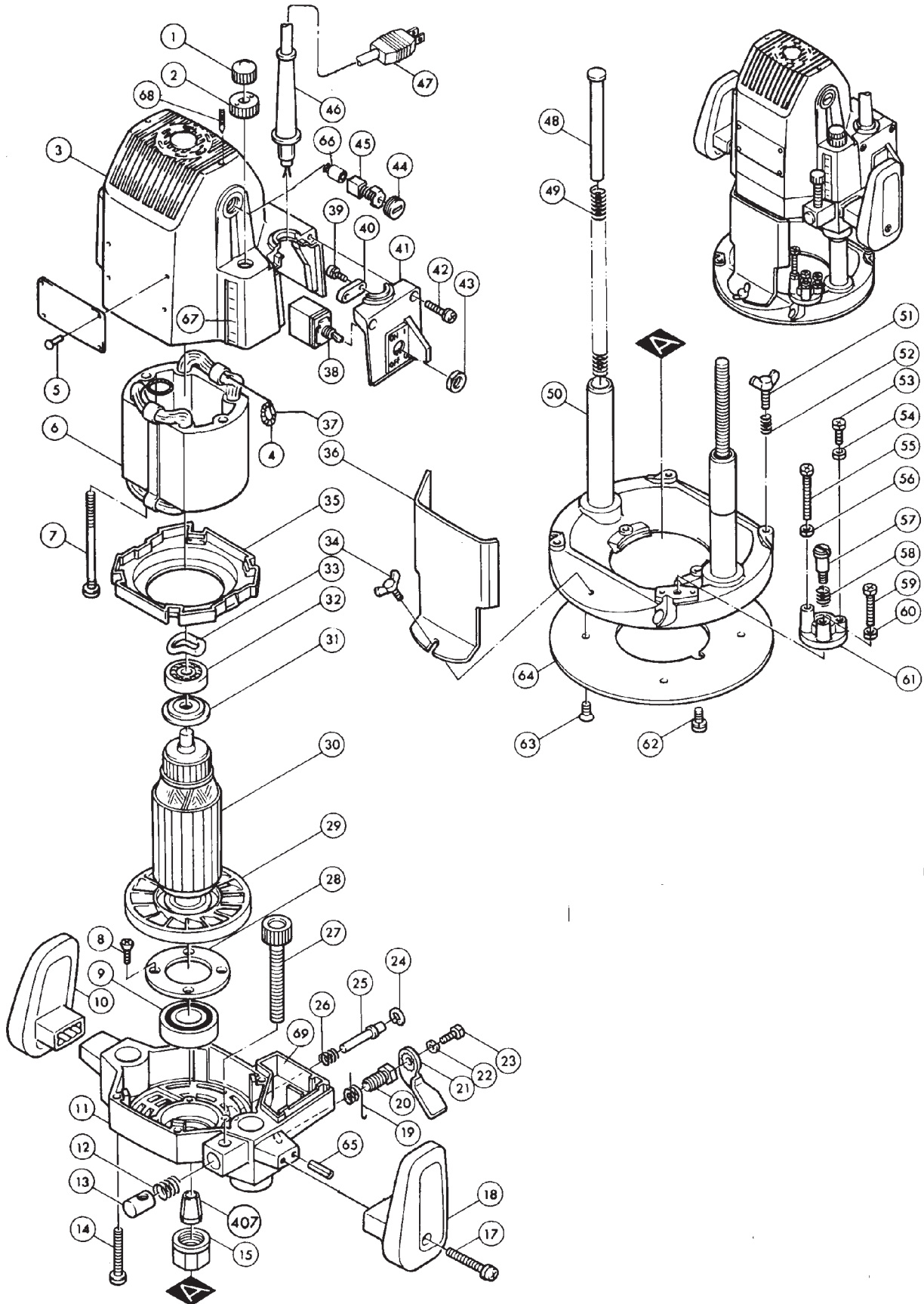




1/2" ROUTER 3612BR
1/2" ROUTER WITH BRAKE 3612BRA

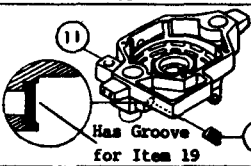
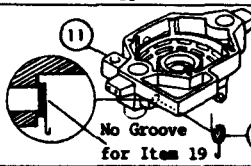


Item No.	Part No.	No. Used	Description	Item No.	Part No.	No. Used	Description
1	252625-8	1	Nut M10	45	181044-0	2	Carbon Brush CB-153
2	410129-8	1	Nylon Nut M10	181048-2	2	Auto Cut Off Carbon Brush CB-155 (Optional)	
3	157109-0	1	Motor Housing Complete (Includes Brush Holder 643653-8 x 2 Scale Label MM 816410-9 & Set Screw M5x8 913206-0 x 2)	46	682504-0	1	Cord Guard 10-85
4	654020-2	2	Garter Spring	47	664463-0	1	Cord with Plug 2P-14-2.5
5	953106-2	4	Rivet O-5	48	314062-5	1	Pole
6	624706-2	1	Field Assembly (With Items 4 & 37)	49	231329-5	2	Compression Spring 11
7	925901-0	2	(+) Hex Bolt M5x85	50	151147-4	1	Base (Old 151158-9)
8	912121-5	4	C.H.Screw M4x14 (With Washer)	51	924216-2	1	Thumb Screw M5x15
9	211321-7	1	Ball Bearing 2012LLB	52	231240-1	1	Compression Spring 7
10	410127-2	1	Knob (L)	53	925222-0	1	(+) Hex Bolt M5x16
11	*	1	Motor Bracket Complete (Includes Separate 410296-9)	54	931202-6	1	Hex Nut M5
12	231142-1	1	Compression Spring 10	55	925262-8	1	(+) Hex Bolt M5x40
13	323559-3	1	Half Nut	56	931202-6	1	Hex Nut M5
14	911261-6	4	P.H.Screw M5x40 (With Washer)	57	251423-7	1	(-) Flat Screw M6
15	763629-0	1	Collet Nut	58	231231-2	1	Compression Spring 12
17	911363-8	2	P.H.Screw M6x40 (With Washer)	59	925247-4	1	(+) Hex Bolt M5x28
18	410126-4	1	Knob (R)	60	931202-6	1	Hex Nut M5
19	*	1	Spring	61	134205-1	1	Stopper Assembly (Includes Items 53-56, 59 & 60)
20	265813-8	1	Set Bolt M10	62	911206-4	2	P.H.Screw M5x10 (With Washer)
21	341933-3	1	Lock Lever	63	912107-9	4	C.H.Screw M4x8
22	942101-7	1	Spring Washer 5	64	413024-1	1	Base Plate
23	265269-5	1	Hex Bolt M5x12	65	951160-0	2	Spring Pin 5-18
24	962062-5	1	Retaining Ring R-12	101	251830-4	1	Screw M10x34
25	256606-4	1	Pin 6	102	342427-1	1	Plate Holder
26	231037-8	1	Compression Spring 7	103	941101-4	1	Flat Washer 5
27	251861-3	1	Screw M10x77	104	942101-7	1	Spring Washer 5
28	285657-0	1	Bearing Retainer 50	105	924206-5	1	Thumb Screw M5x10
29	241823-9	1	Fan 92	106	163053-1	1	Roll
30	614740-0	1	Armature Assembly * (Includes Items 29, 31 & 32)	108	941151-9	1	Flat washer 6
31	*	1	Insulation Washer	109	942151-2	1	Spring Washer 6
32	211068-3	1	Ball Bearing 6200LB	110	924311-8	1	Thumb Screw M6x12
33	253913-6	1	Wave Washer 20	Accessories			
34	924206-5	1	Thumb Screw M5x10	400	132306-9	1	Guide Base Assembly (Includes Items 101, 108-110)
35	411231-0	1	Baffle Plate (Fan Guide)	401	123022-4	1	Trimmer Guide Assembly (Includes Items 102-106)
36	410128-0	1	Chip Deflector	402	342428-9	1	Straight Guide
37	654502-4	2	Solderless Connector P-2	403	763803-0	1	1/4" Collet Sleeve
38	651471-0	1	Switch	404	763805-6	1	3/8" Collet Sleeve
39	911121-2	2	P.H.Screw M4x14 (With Washer)	405	----	1	Templet Guide (See Catalogue for Details)
40	687001-1	1	Strain Relief	406	321492-3	1	Templet Guide Adaptor
41	410297-7	1	Switch Cover	407	763622-4	1	1/2" Collet Cone
42	911138-5	2	P.H.Screw M4x20 (With Washer)	408	781213-9	1	Wrench 8 (For Stopper)
43	652102-4	1	Plastic Hex Nut M12 (For switch)	409	781210-5	1	Wrench 24 (For Collet Nut)
44	643650-4	2	Brush Holder Cap 6.5-13.5	410	122159-4	1	Router Stand

* SEE SERVICE CHANGE

SERVICE CHANGES



1. Change on Motor Bracket and Spring.

Item No.	Description	Type 1	Type 2
			
11	Motor Bracket Complete	157328-8	155763-4
19	Spring	231250-8 Compression Spring 10	231574-2 Tension Spring 15

The above parts are interchangeable as a set.

Type 2 Tension Spring 15 can be used for Type 1 Motor Bracket Complete.

2. Change on Insulation Washer.

Item No.	Description	Type 1	Type 2
			
30	Armature	614740-0	
		Has 14mm shaft to accept Washer	Has 16mm shaft to accept Washer
31	Insulation Washer	681618-2	681624-7

