



Nibbler
JN3201J 10 ga. (3.2 mm)

High cutting capacity

Steel up to 400 N/mm²: 10 ga. (3.2 mm)

Steel up to 600 N/mm²: 13ga. (2.5 mm)

Steel up to 800 N/mm²: 20 ga. (1.0 mm)

Aluminum up to 200 N/mm²: 10 ga. (3.5 mm)



710W continuous rating input

Low noise level at only 81dB(A)

Gauge

The groove on the yoke serves as a thickness gauge for shearing mild or stainless steel plate. If the material fits within the groove, it is shearable.

Steel up to 600 N/mm²: 13 ga. (2.5 mm)



Steel up to 600 N/mm²: 10 ga. (3.5 mm)

Ergonomically designed handle with rubberized soft grip

provides comfortable grip and more control while minimizing hand fatigue and pain.



On-tool storage for hex wrench

Hex wrench can be stored on the model for operator's convenience.

Part standardization



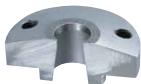
Please make a hole beforehand Ø42mm



Minimum cutting radius
Outer edge: 5-1/16" (128 mm)
Inner edge: 4-3/4" (120 mm)

Die

Part No. 792292-2



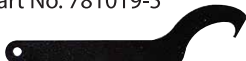
Punch

Part No. 792728-1



Wrench 50

Part No. 781019-5

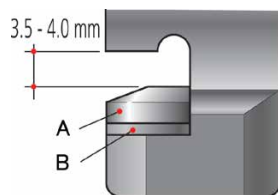


Washer

Part No. 341796-7

(To keep clearance of 3.5 to 4.0 mm, use a washer or two under the die when installing a resharpened die.)

A. Die
B. Washer



Nibbler

JN3201J 10 ga. (3.2 mm)

303

Maximum Capacities Capacity	Mild Steel: 10 ga. (3.2 mm) Stainless: 13 ga. (2.5 mm) Aluminum: 10 ga. (3.5 mm)
AMPS (120V)	6.2 A
Strokes Per Minute	1,300 SPM
Minimum Cutting Radius:	Outer Edge: 5-1/16" (128 mm) Inner Edge: 4-3/4" (120 mm)
Overall Length	8-7/8" (225 mm)
Net Weight	7.4 lbs (3.4 kg)
Double Insulation	Standard Equipment: Punch (792728-1), Die (792292-2), Hex wrench (783201-2), Wrench (781019-5), Plastic Carrying Case (197211-7)

When QUALITY & SERVICE COUNTS – Choose Makita

makita.ca