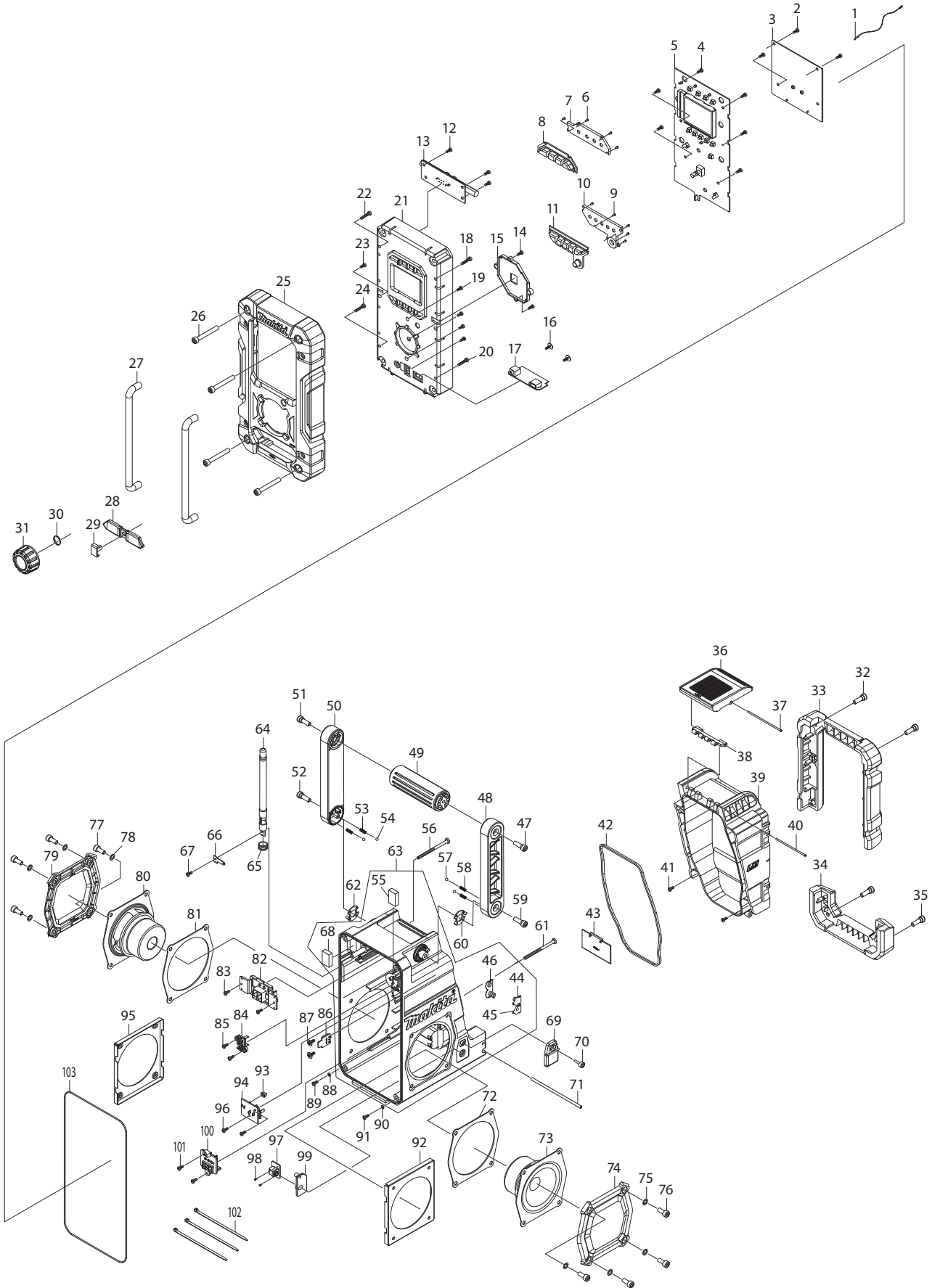




03 - 2016

DMR108

7.2-18V LXT AM/FM Job Site Radio w/Bluetooth



Item No.	Type	Sub	Part No.	Description	Qty	Unit
1			SE00000437	WIRE	1	PC.
2			SE00000325	SCREW PTB 3X8(NI)	3	PC.
3	1		SE00000477	PCB A ASS'Y (DMR108) 05A XA2	1	PC.
	2		SE00000595	PCB A ASS'Y	1	PC.
4			SE00000325	SCREW PTB 3X8(NI)	6	PC.
5			SE00000479	PCB C ASS'Y USA 07CAXA2	1	PC.
6			SE09090011	SCREW 1.7	4	PC.
7			SE00000333	POWER BUTTON HOLDER	1	PC.
8			SE00000334	POWER BUTTON	1	PC.
9			SE09090011	SCREW 1.7	5	PC.
10			SE00000336	PRESET BUTTON HOLDER	1	PC.
11			SE00000337	PRESET BUTTON	1	PC.
12			SE00000325	SCREW PTB 3X8(NI)	3	PC.
13			SE00000339	PCB P ANT BAR ASS'Y	1	PC.
14			SE00000325	SCREW PTB 3X8(NI)	2	PC.
15			SE00000239	KNOB LENS HOLDER	1	PC.
16			SE00000193	SCREW 3X10	2	PC.
17			SE00000343	PCB P USB ASS'Y	1	PC.
18			SE09064161	SCREW M4X16	1	PC.
19			SE00000325	SCREW PTB 3X8(NI)	4	PC.
20			SE09064161	SCREW M4X16	1	PC.
21			SE00000347	FRONT CABINET ASS'Y	1	PC.
22			SE09064161	SCREW M4X16	1	PC.
23			SE00000325	SCREW PTB 3X8(NI)	1	PC.
24			SE09064161	SCREW M4X16	1	PC.
25			SE00000351	FRONT BUMPER	1	PC.
26			SE00000160	SCREW PTHE6X47(CR)	4	PC.
27			SE0338PC5Z	FRONT BAR	2	PC.
28			SE00000355	JACK RUBBER COVER	1	PC.
29			SE00000356	JACK COVER	1	PC.
30			SE21B1110A	ROTARY KNOB RING	1	PC.
31			SE00000482	ROTARY KNOB (BLK)	1	PC.
32			SE09176166	HEX SCREW M6X16	2	PC.
33			SE00000357	BATTERY BUMPER	1	PC.
34			SE00000359	REAR BUMPER	1	PC.
35			SE09176166	HEX SCREW M6X16	2	PC.
36			SE00000362	LOCKER COVER	1	PC.
37			SE00000364	LOCKER FIXER PIN 73.5MM	1	PC.
38			SE00000365	LOCK HINGER	1	PC.
39			SE00000483	BATTERY COVER	1	PC.
40			SE00000369	LOCKER FIXER PIN 64.5MM	1	PC.
41			SE00000325	SCREW PTB 3X8(NI)	2	PC.
42			SE00000371	BATTERY COVER PACKING	1	PC.
43			SE0307PC5Z	BACK UP BATTERY COVER	1	PC.
44			SE00000466	BATTERY CONTACT(+) 2100RA00700	1	PC.
45			SE00000467	BATTERY CONTACT (-)2100PL00200	1	PC.
46			SE021E9030	+/- BATTERY CONTACT ASS'Y	1	PC.
47			SE00000176	SCREW PTHE6X20(CR)	1	PC.
48			SE00000177	HANDLE HOLDER(R)	1	PC.
49			SE00000179	HANDLE	1	PC.
50			SE00000180	HANDLE HOLDER (L)	1	PC.
51			SE00000176	SCREW PTHE6X20(CR)	1	PC.
52			SE09176166	HEX SCREW M6X16	1	PC.
53			SE00000184	SPRING	2	PC.
54			SE09994007	STEEL BALL	2	PC.
55			SE023PC020	EVA 25X18X5.5	1	PC.
56			SE00000445	SCREW PTB 3X45(NI)	1	PC.
57			SE09994007	STEEL BALL	2	PC.
58			SE00000184	SPRING	2	PC.
59			SE09176166	HEX SCREW M6X16	1	PC.
60			SE00000187	HANDLE SUS-PLATE (R)	1	PC.

Item No.	Type	Sub	Part No.	Description	Qty	Unit
61			SE00000445	SCREW PTB 3X45(NI)	1	PC.
62			SE00000192	HANDLE SUS-PLATE(L)	1	PC.
63			SE00000485	REAR CABINET(BLUE) ASS'Y	1	PC.
64			SE00000395	RUBBER ANT 88-108(BLK)	1	PC.
65			SE00000398	ROD ANT PACKING	1	PC.
66			SE00000396	ROD ANT TERMINAL	1	PC.
67			SE00000325	SCREW PTB 3X8(NI)	1	PC.
68			SE023PC020	EVA 25X18X5.5	1	PC.
69			SE00000403	DC RUBBER COVER	1	PC.
70			SE00000404	SCREW PTHE 3X14(CR)	1	PC.
71			SE021PC030	BATTERY COVER LOCKER	1	PC.
72			SE00000406	SPEAKER PACKING	1	PC.
73			SE00000407	SPEAKER(R)	1	PC.
74			SE00000408	SPEAKER PANEL ASS'Y	1	PC.
75			SE024J9040	PACKING	4	PC.
76			SE9076146A	HEX SCREW M6X14	4	PC.
77			SE9076146A	HEX SCREW M6X14	4	PC.
78			SE024J9040	PACKING	4	PC.
79			SE00000408	SPEAKER PANEL ASS'Y	1	PC.
80			SE00000438	SPEAKER (L)	1	PC.
81			SE00000406	SPEAKER PACKING	1	PC.
82			SE00000416	TERMINAL E (B)	1	PC.
83			SE00000325	SCREW PTB 3X8(NI)	2	PC.
84			SE00000200	TERMINAL C	1	PC.
85			SE00000325	SCREW PTB 3X8(NI)	2	PC.
86			SE00000423	PCB B AUX IN 2 ASS'Y	1	PC.
87			SE00000193	SCREW 3X10	2	PC.
88			SE00000199	SILICON RUBBER WASHER	1	PC.
89			SE00000325	SCREW PTB 3X8(NI)	1	PC.
90			SE00000199	SILICON RUBBER WASHER	1	PC.
91			SE00000325	SCREW PTB 3X8(NI)	1	PC.
92			SE00000422	SPEAKER HOLDER	1	PC.
93			SE00000430	SWITCH KNOB	1	PC.
94			SE00000488	PCB D BATTERY SWITCH ASS'Y	1	PC.
95			SE00000422	SPEAKER HOLDER	1	PC.
96			SE00000325	SCREW PTB 3X8(NI)	2	PC.
97			SE00000433	PCB B DC JACK ASS'Y	1	PC.
98			SE09090011	SCREW 1.7	2	PC.
99			SE00000435	DC JACK HOLDER	1	PC.
100			SE00000473	TERMINAL 10.8V ASSY 011 WA1	1	PC.
101			SE00000325	SCREW PTB 3X8(NI)	1	PC.
102			SE00000195	W/TIES 100MM	3	PC.
103			SE024PC040	PACKING	1	PC.

ACCESSORIES

- Visit www.makita.ca for more accessories information -

A01			SE00000104	AC ADAPTER	1	PC.
A02			-----	7.2V - 18V LI-ION BATTERIES		
A03			-----	CHARGERS		