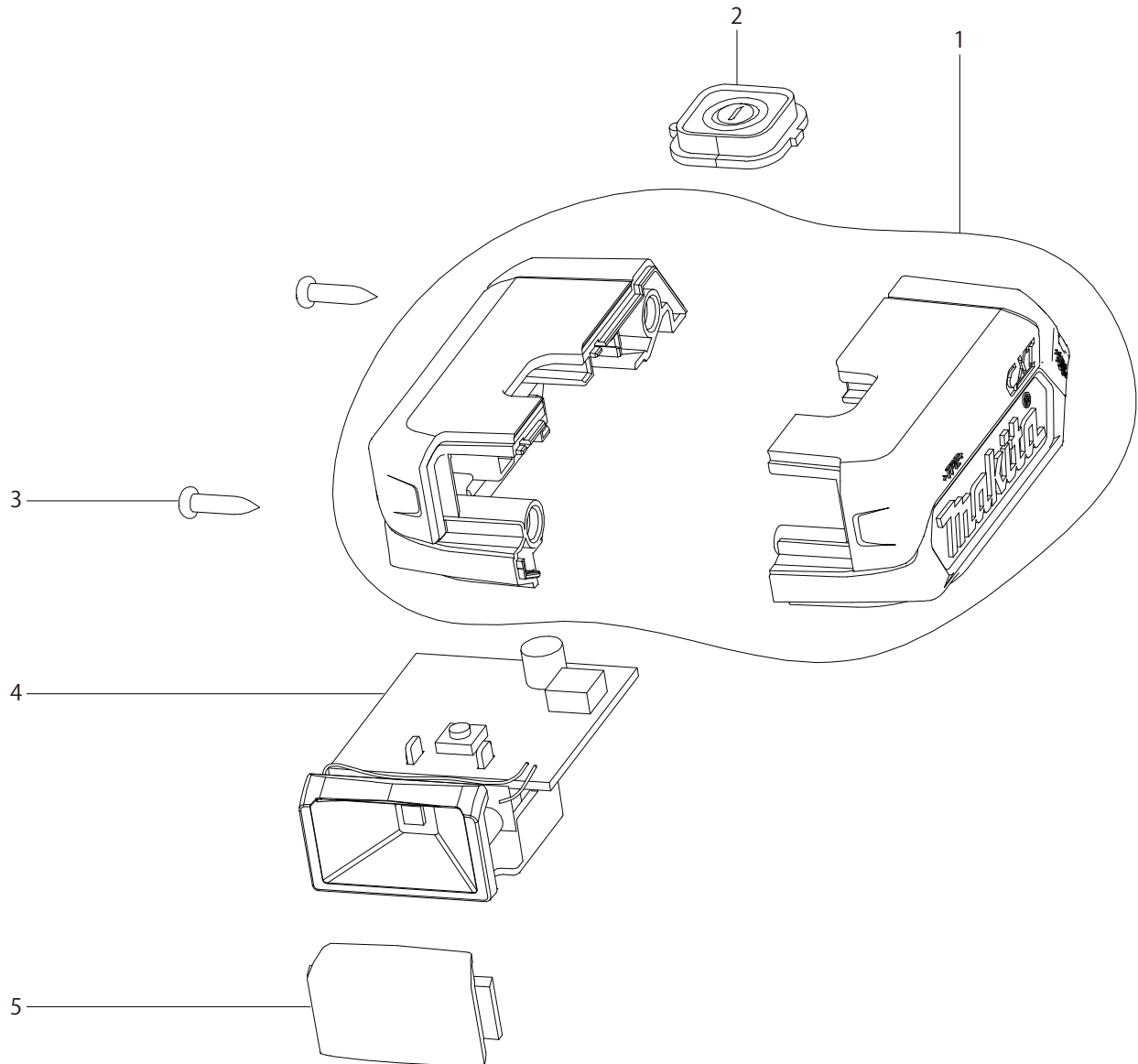




04 - 2016  
ML103  
12V Max CXT FLASHLIGHT



<b>Item No.</b>	<b>Type</b>	<b>Sub</b>	<b>Part No.</b>	<b>Description</b>	<b>Qty</b>	<b>Unit</b>
001			GM00001496	HOUSING L/R ASS'Y ROS81030003	1	PC.
002			GM00001495	SWITCH HOLDER ASSY ROS81030002	1	PC.
003			GM00001024	SCREW 3X12 B0130120202	2	PC.
004			GM00001493	MAIN CIRCUIT ASSY ROS81030001	1	PC.
005			GM00001492	LENZ ROS81030000	1	PC.
			<b><u>ACCESSORIES</u></b>			
			<b>- Visit <a href="http://www.makita.ca">www.makita.ca</a> for more accessories information -</b>			
A01			DC10SB	RAPID CHARGER DC10SB	1	PC.
A02			-----	12V MAX LI-ION BATTERY, SLIDE TYPE	2	PC.