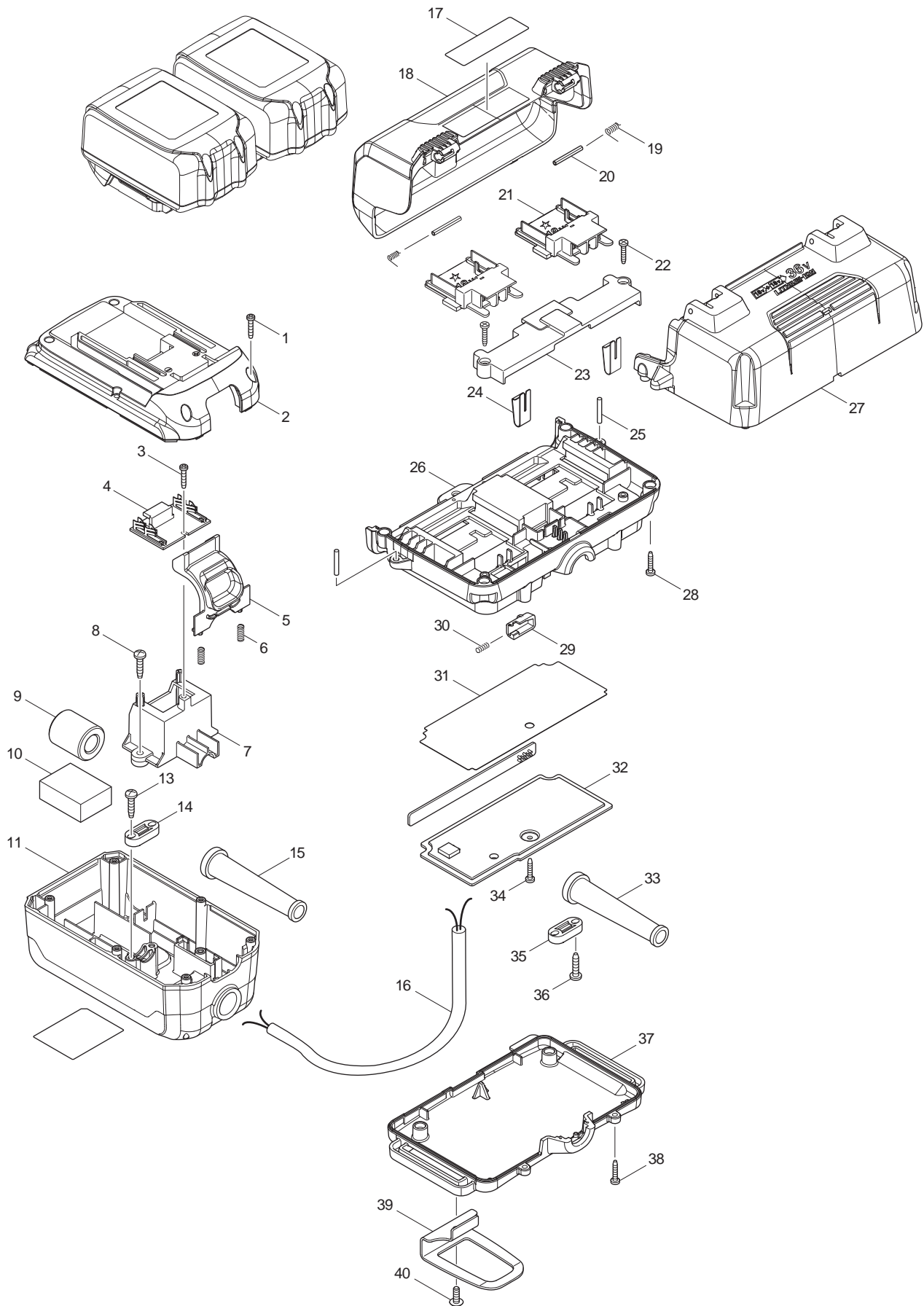




01 - 2011

195512-7

BATTERY CONVERTER BCV01 (18 > 36V)



Item No	Type	Ref	Part No	Description	Qty	Unit
001			266277-9	TAPPING SCREW TORX 3X16	6	PC.
002			452190-9	OUTER CASE (UPPER)	1	PC.
003			266277-9	TAPPING SCREW TORX 3X16	1	PC.
004			631879-4	TERMINAL BOARD COMPLETE	1	PC.
005			140100-5	HOOK COMPLETE	1	PC.
006			234120-0	COMPRESSION SPRING 4	2	PC.
007			451260-1	INNER SUPPORT	1	PC.
008			266326-2	TAPPING SCREW 4X18	2	PC.
009			688140-0	LINE FILTER	1	PC.
010			685718-0	SPONGE SHEET	1	PC.
011			451256-2	OUTER CASE (UNDER)	1	PC.
013			266326-2	TAPPING SCREW 4X18	2	PC.
014			687140-7	STRAIN RELIEF	1	PC.
015			682504-0	CORD GUARD 10-85	1	PC.
016			660280-6	POWER SUPPLY CORD	1	PC.
017			819285-5	MAKITA LOGO LABEL	1	PC.
018			187082-0	BATTERY COVER SET	1	PC.
		INC.	892538-7	CAUTION LABEL (EN/FR/SP)	1	PC.
		INC.		Item No. 17		
019			233584-5	TORSION SPRING 4	2	PC.
020			951075-1	SPRING PIN 3-28	2	PC.
021	3		643899-6	TERMINAL	2	PC.
022			266130-9	TAPPING SCREW BIND PT 3X16	2	PC.
023			452636-5	TERMINAL HOLDER	1	PC.
024			232267-4	LEAF SPRING	2	PC.
025			256158-5	PIN 3	2	PC.
026	2		141294-9	CENTER CASE COMPLETE	1	PC.
027			452635-7	UNDER COVER	1	PC.
028			266130-9	TAPPING SCREW BIND PT 3X16	4	PC.
029			452637-3	SLIDE LATCH	1	PC.
030			231293-0	COMPRESSION SPRING 3	1	PC.
031			452725-6	PROTECTION PLATE	1	PC.
033			682504-0	CORD GUARD 10-85	1	PC.
034			266130-9	TAPPING SCREW BIND PT 3X16	1	PC.
035			687140-7	STRAIN RELIEF	1	PC.
036			266326-2	TAPPING SCREW 4X18	2	PC.
037			452633-1	TOP COVER	1	PC.
038			266130-9	TAPPING SCREW BIND PT 3X16	4	PC.
039			346401-1	HOOK	1	PC.
040			266622-8	+ TRUSS HEAD SCREW M4X12	1	PC.
C01			872280-6	CARTON	1	PC.
D01			654509-0	CONNECTOR 2-SD	1	PC.
D02			654510-5	INSULATED CONNECTOR 5.5-SD	5	PC.

ACCESSORIES

A02			194205-3	18V LI-ION BATTERY BL1830	1	PC.
A02			194230-4	18V LI-ION BATTERY BL1830, 2/PK	1	PK
A02			194288-3	18V LI-ION BATTERY BL1830, 10/PK	1	PK
A02			-----	18V LI-ION BATTERY		

*BL1815 cannot be used with BCV01 (T/I# 92166, 93560)