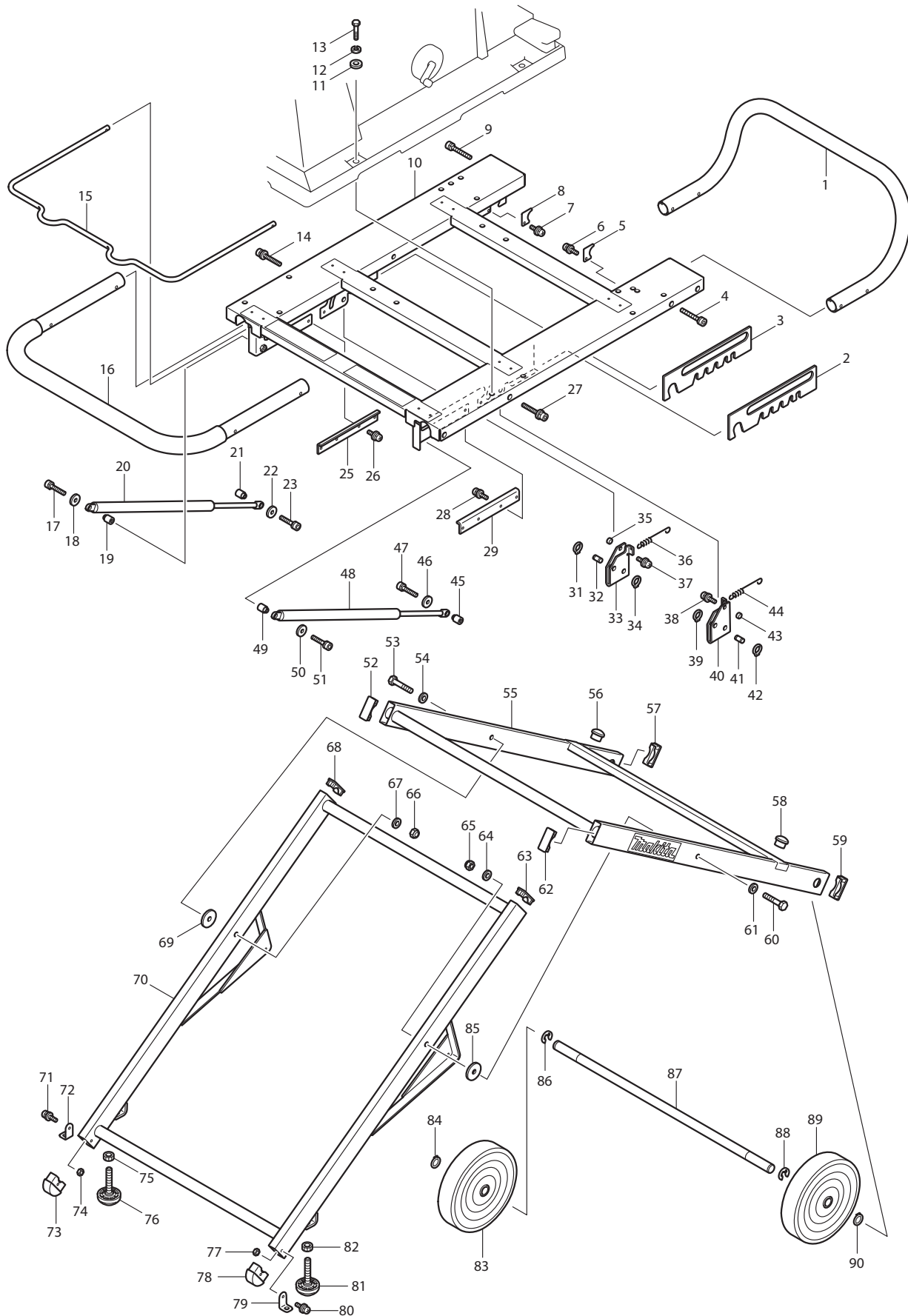




08 - 2006  
Part No. 194093-8 Stand Set for Table Saw  
(Models 2702, 2703, 2704, 2705, 2711)



Item No	Type	Part No	Description	Qty	Unit
1		331714-3	TABLE PIPE 32	1	PC.
2		345674-3	LOCK PLATE	1	PC.
3		345674-3	LOCK PLATE	1	PC.
4		266395-3	HEX.SOCKET HEAD BOLT M6X45	2	PC.
5		345679-3	STOPPER PLATE	1	PC.
6		265167-3	PAN HEAD SCREW M5X16	1	PC.
7		265167-3	PAN HEAD SCREW M5X16	1	PC.
8		345679-3	STOPPER PLATE	1	PC.
9		266395-3	HEX.SOCKET HEAD BOLT M6X45	2	PC.
10		154830-2	STAND TABLE COMPLETE	1	PC.
	INC.	810125-0	CAUTION LABEL	1	PC.
	INC.	816857-7	INDICATION LABEL	1	PC.
11		267800-3	FLAT WASHER 8	4	PC.
12		267801-1	SPRING WASHER 8	4	PC.
13		265559-6	HEX. BOLT M8X40	4	PC.
14		266394-5	HEX.SOCKET HEAD BOLT M6X40	2	PC.
15		324641-1	LEVER	1	PC.
16		154829-7	HANDLE COMPLETE	1	PC.
17		266393-7	HEX.SOCKET HEAD BOLT M6X30	1	PC.
18		267315-0	FLAT WASHER 6	1	PC.
19		324644-5	PIN 15	1	PC.
20		168422-1	GUS SPRING 30-180	1	PC.
21		324644-5	PIN 15	1	PC.
22		267315-0	FLAT WASHER 6	1	PC.
23		266393-7	HEX.SOCKET HEAD BOLT M6X30	1	PC.
25		345680-8	HOLDER PLATE	1	PC.
26		265167-3	PAN HEAD SCREW M5X16	3	PC.
27		266394-5	HEX.SOCKET HEAD BOLT M6X40	2	PC.
28		265167-3	PAN HEAD SCREW M5X16	3	PC.
29		345680-8	HOLDER PLATE	1	PC.
31		257949-7	RETAINING RING S-10	2	PC.
32		324643-7	PIN 10	2	PC.
33		345676-9	LOCK LINK R	1	PC.
34		257949-7	RETAINING RING S-10	2	PC.
35		257272-0	RING 5	1	PC.
36		231837-6	TENSION SPRING 9	1	PC.
37		265167-3	PAN HEAD SCREW M5X16	1	PC.
38		265167-3	PAN HEAD SCREW M5X16	1	PC.
39		257949-7	RETAINING RING S-10	2	PC.
40		345675-1	LOCK LINK L	1	PC.
41		324643-7	PIN 10	2	PC.
42		257949-7	RETAINING RING S-10	2	PC.
43		257272-0	RING 5	1	PC.
44		231837-6	TENSION SPRING 9	1	PC.
45		324644-5	PIN 15	1	PC.
46		267315-0	FLAT WASHER 6	1	PC.
47		266393-7	HEX.SOCKET HEAD BOLT M6X30	1	PC.
48		168422-1	GUS SPRING 30-180	1	PC.
49		324644-5	PIN 15	1	PC.
50		267315-0	FLAT WASHER 6	1	PC.
51		266393-7	HEX.SOCKET HEAD BOLT M6X30	1	PC.
52		418846-4	CAP	1	PC.
53		265558-8	HEX. BOLT M10X60	1	PC.
54		267796-8	PLAIN WASHER 10	1	PC.

Item No	Type	Part No	Description	Qty	Unit
55		154876-8	OUTER FRAME COMPLETE	1	PC.
	INC.	819173-6	MAKITA LOGO LABEL	1	PC.
56		286215-5	CAP 28	1	PC.
57		418846-4	CAP	1	PC.
58		286215-5	CAP 28	1	PC.
59		418846-4	CAP	1	PC.
60		265558-8	HEX. BOLT M10X60	1	PC.
61		267796-8	PLAIN WASHER 10	1	PC.
62		418846-4	CAP	1	PC.
63		418846-4	CAP	1	PC.
64		267796-8	PLAIN WASHER 10	1	PC.
65		252191-5	HEX.LOCK NUT M10-17	1	PC.
66		252191-5	HEX.LOCK NUT M10-17	1	PC.
67		267796-8	PLAIN WASHER 10	1	PC.
68		418846-4	CAP	1	PC.
69		267316-8	FLAT WASHER 10	1	PC.
70		165418-3	INNER FLAME	1	PC.
71		265167-3	PAN HEAD SCREW M5X16	1	PC.
72		345695-5	FIX PLATE	1	PC.
73		418847-2	FOOT	1	PC.
74		252189-2	HEX.NUT M5	1	PC.
75		252651-7	NUT M12	1	PC.
76		266353-9	ADJUST BOLT M12	1	PC.
77		252189-2	HEX.NUT M5	1	PC.
78		418847-2	FOOT	1	PC.
79		345695-5	FIX PLATE	1	PC.
80		265167-3	PAN HEAD SCREW M5X16	1	PC.
81		266353-9	ADJUST BOLT M12	1	PC.
82		252651-7	NUT M12	1	PC.
83		168423-9	WHEEL 200	1	PC.
84		257950-2	RETAINING RING S-20	1	PC.
85		267316-8	FLAT WASHER 10	1	PC.
86		257951-0	STOP RING E-15	1	PC.
87		324642-9	WHEEL SHAFT	1	PC.
88		257951-0	STOP RING E-15	1	PC.
89		168423-9	WHEEL 200	1	PC.
90		257950-2	RETAINING RING S-20	1	PC.
C01		847630-4	CARTON F/194093-8	1	PC.
<b><u>ACCESSORIES</u></b>					
A01		781217-1	WRENCH 10-13	1	PC.
A02		783217-7	HEX. WRENCH 5	1	PC.