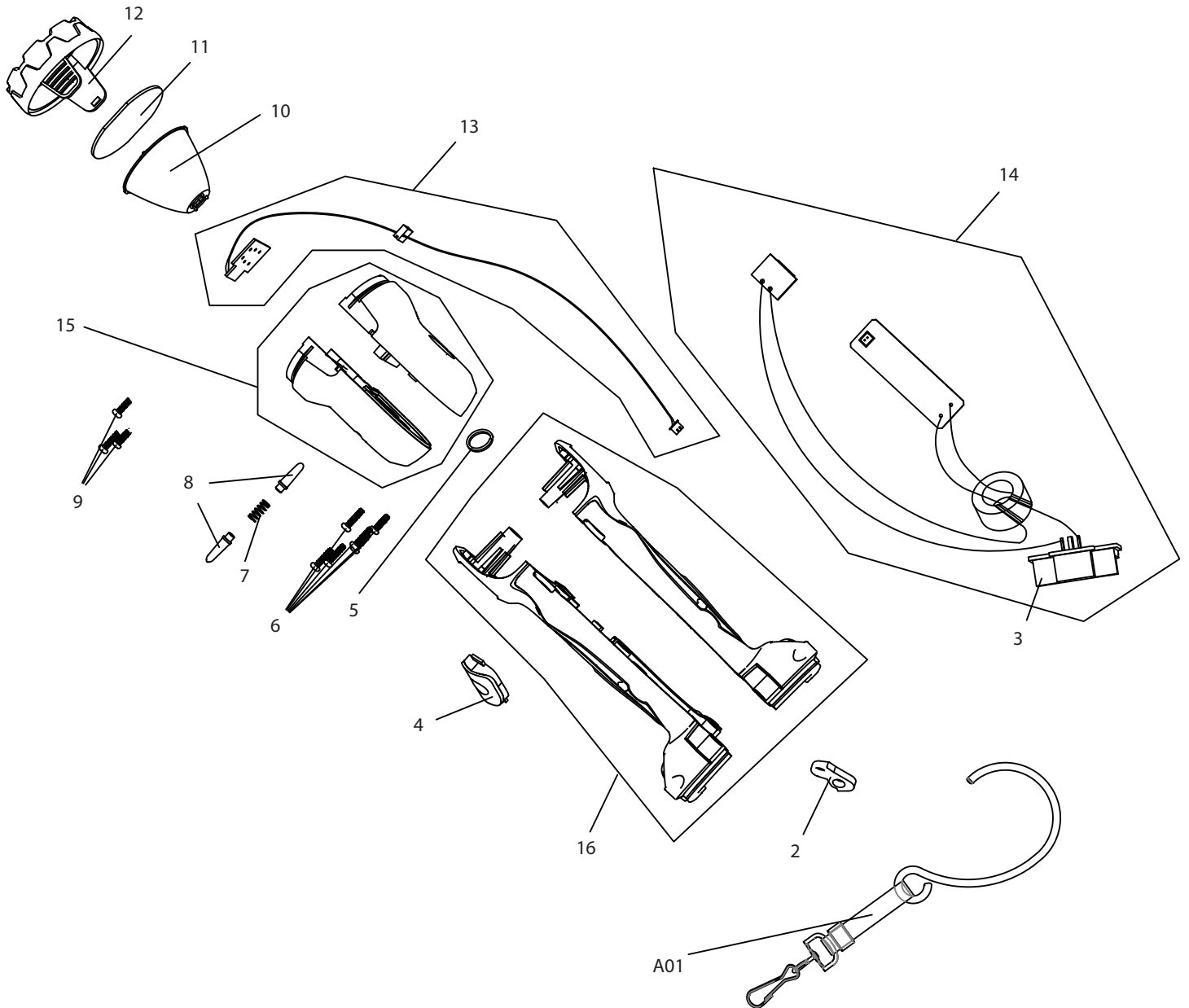




12 - 2014
DML802
14.4/18V LED FLASHLIGHT



Item No.	Type	Sub	Part No.	Description	Qty	Unit
2			GM00001290	HOOK PLATE	1	PC.
3			GM00001117	BATTERY HOLDER	1	PC.
4			GM00001291	SWITCH COVER	1	PC.
5			GM00001292	RING	1	PC.
6			GM00001293	SCREW 3X12 PB	6	PC.
7	1		GM00001294	* COMPRESSION SPRING	1	PC.
	2		GM00001703	* KNOCK SHAFT SPRING	1	PC.
8	1		GM00001295	* LOCKING SHAFT	2	PC.
	2		GM00001704	* KNOCK SHAFT	2	PC.
9	1		GM00001296	* PH SCREW M3X8 - No longer used	3	PC.
10			GM00001297	REFLECTOR	1	PC.
11			GM00001298	LENS	1	PC.
12			GM00001299	BEZEL	1	PC.
13	1		GM00001213	* LED CIRCUIT ASS'Y	1	PC.
	2		GM00001951	* LED CIRCUIT ASS'Y	1	PC.
14			GM00001301	MAIN CIRCUIT ASS'Y	1	PC.
15	1		GM00001302	* ALUMINUM HEAD L/R	1	SET
	2		GM00001702	* ALUMINUM HEAD	1	SET
16			GM00001303	HOUSING L/R	1	SET
17	2		GM00001296	* SCREW M3X8	2	PC
18	2		GM00001701	* WIRE HOLDER	2	PC
<u>ACCESSORIES</u>						
A01			GM00001289	HOOK BAND SET	1	PC.
A02			-----	14.4/18V LI-ION BATTERY		
A03			-----	BATTERY CHARGER		
A04			-----	LI-ION BATTERY ACCESSORIES		

SERVICE CHANGES

1. Change of Aluminum head and relevant parts

(T/I# Y07493)

Item No.	Description	Type 1	Type 2	Image No.
15	ALUMINUM HEAD	GM00001302	GM00001702	1
9	PH SCREW M3X8	GM00001296	N/A	2
13	LED CIRCUIT ASS'Y	GM00001213	GM00001951	3
17	SCREW M3X8	GM00001296	GM00001296	4
18	WIRE HOLDER	GM00001701	GM00001701	5
7	COMPRESSION SPRING	GM00001294	GM00001703	6
8	LOCKING SHAFT	GM00001295	GM00001704	7

Above parts are completely interchangeable as a set

No. (1)

Current

New



Aluminum head;
Current: two-halves
New: integrated type

(2)



M3x8 Screw

(3)

(4)



LED circuit assembly

(5)

(nothing)



Wire holder

(6)

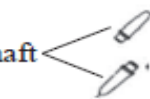
Compression spring



Knock shaft spring

(7)

Rocking shaft



Knock shaft