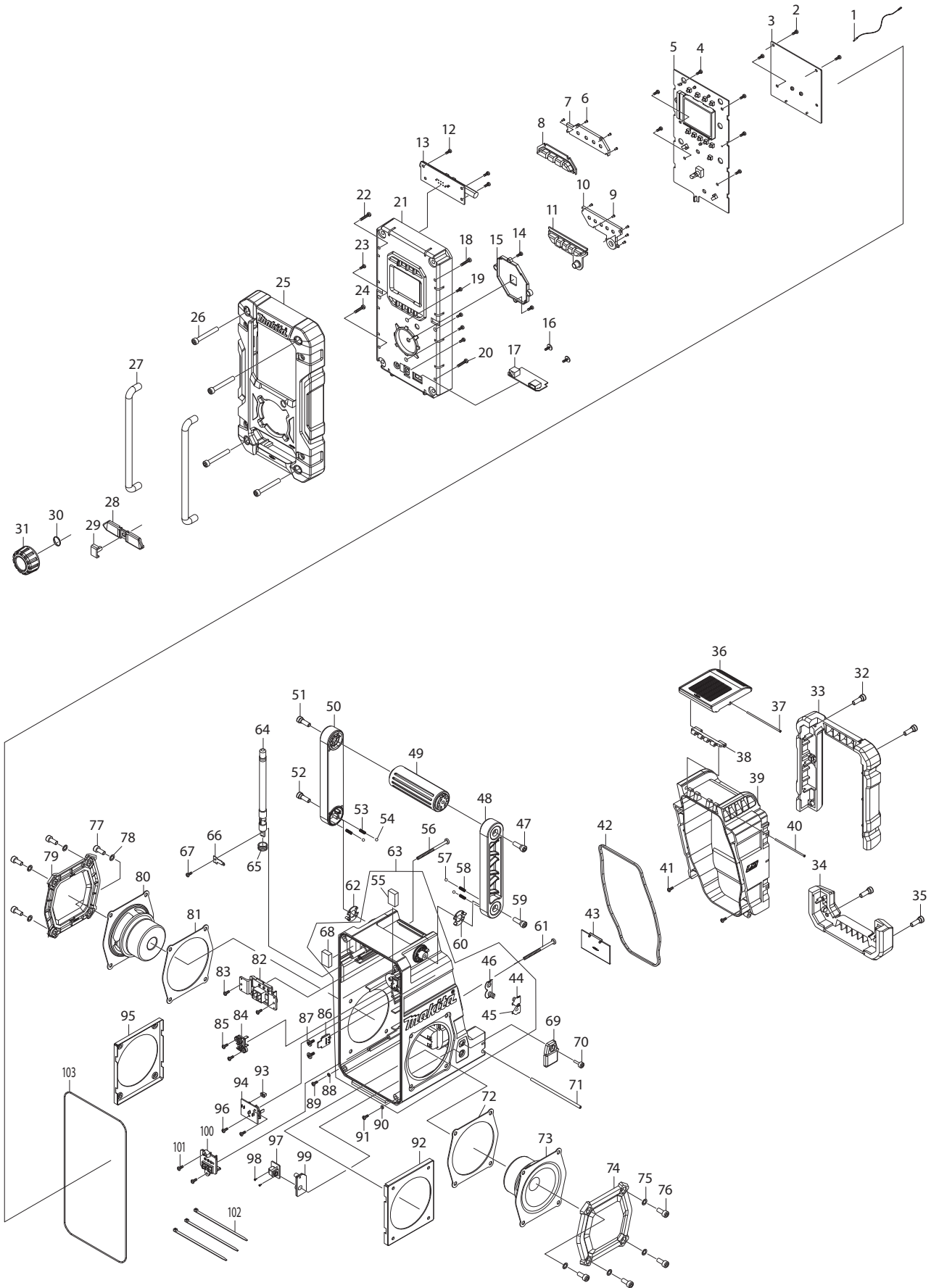




09 - 2017
DMR108C
7.2-18V LXT AM/FM Job Site Radio
w/Bluetooth



Item N	Type	Sub	Part No.	Description	Qty	Unit
001			SE00000437	WIRE	1	PC.
002			SE00000325	SCREW PTB 3X8(NI)	3	PC.
003			SE00000595	PCB A ASS'Y	1	PC.
004			SE00000325	SCREW PTB 3X8(NI)	6	PC.
005			SE00000479	PCB C ASS'Y USA 07CAXA2	1	PC.
006			SE09090011	SCREW 1.7	4	PC.
007			SE00000333	POWER BUTTON HOLDER	1	PC.
008			SE00000334	POWER BUTTON	1	PC.
009			SE09090011	SCREW 1.7	5	PC.
010			SE00000336	PRESET BUTTON HOLDER	1	PC.
011			SE00000337	PRESET BUTTON	1	PC.
012			SE00000325	SCREW PTB 3X8(NI)	3	PC.
013			SE00000339	PCB P ANT BAR ASS'Y	1	PC.
014			SE00000325	SCREW PTB 3X8(NI)	2	PC.
015			SE00000239	KNOB LENS HOLDER	1	PC.
016			SE00000193	SCREW 3X10	2	PC.
017			SE00000343	PCB P USB ASS'Y	1	PC.
018			SE09064161	SCREW M4X16	1	PC.
019			SE00000325	SCREW PTB 3X8(NI)	4	PC.
020			SE09064161	SCREW M4X16	1	PC.
021			SE00000347	FRONT CABINET ASS'Y	1	PC.
022			SE09064161	SCREW M4X16	1	PC.
023			SE00000325	SCREW PTB 3X8(NI)	1	PC.
024			SE09064161	SCREW M4X16	1	PC.
025			SE00000351	FRONT BUMPER	1	PC.
026			SE00000160	SCREW PTHE6X47(CR)	4	PC.
027			SE0338PC5Z	FRONT BAR	2	PC.
028			SE00000355	JACK RUBBER COVER	1	PC.
029			SE00000356	JACK COVER	1	PC.
030			SE21B1110A	ROTARY KNOB RING	1	PC.
031			SE00000482	ROTARY KNOB (BLK)	1	PC.
032			SE09176166	HEX SCREW M6X16	2	PC.
033			SE00000357	BATTERY BUMPER	1	PC.
034			SE00000359	REAR BUMPER	1	PC.
035			SE09176166	HEX SCREW M6X16	2	PC.
036			SE00000362	LOCKER COVER	1	PC.
037			SE00000364	LOCKER FIXER PIN 73.5MM	1	PC.
038			SE00000365	LOCK HINGER	1	PC.
039			SE00000483	BATTERY COVER	1	PC.
040			SE00000369	LOCKER FIXER PIN 64.5MM	1	PC.
041			SE00000325	SCREW PTB 3X8(NI)	2	PC.
042			SE00000371	BATTERY COVER PACKING	1	PC.
043			SE0307PC5Z	BACK UP BATTERY COVER	1	PC.
044			SE00000466	BATTERY CONTACT(+) 2100RA00700	1	PC.
045			SE00000467	BATTERY CONTACT (-)2100PL00200	1	PC.
046			SE021E9030	+/- BATTERY CONTACT ASS'Y	1	PC.
047			SE00000176	SCREW PTHE6X20(CR)	1	PC.
048			SE00000177	HANDLE HOLDER(R)	1	PC.
049			SE00000179	HANDLE	1	PC.
050			SE00000180	HANDLE HOLDER (L)	1	PC.
051			SE00000176	SCREW PTHE6X20(CR)	1	PC.
052			SE09176166	HEX SCREW M6X16	1	PC.
053			SE00000184	SPRING	2	PC.
054			SE09994007	STEEL BALL	2	PC.
055			SE023PC020	EVA 25X18X5.5	1	PC.
056			SE00000445	SCREW PTB 3X45(NI)	1	PC.

Item N	Type	Sub	Part No.	Description	Qty	Unit
057			SE09994007	STEEL BALL	2	PC.
058			SE00000184	SPRING	2	PC.
059			SE09176166	HEX SCREW M6X16	1	PC.
060			SE00000187	HANDLE SUS-PLATE (R)	1	PC.
061			SE00000445	SCREW PTB 3X45(NI)	1	PC.
062			SE00000192	HANDLE SUS-PLATE(L)	1	PC.
063			SE00000485	REAR CABINET(BLUE) ASS'Y	1	PC.
064			SE00000395	RUBBER ANT 88-108(BLK)	1	PC.
065			SE00000398	ROD ANT PACKING	1	PC.
066			SE00000396	ROD ANT TERMINAL	1	PC.
067			SE00000325	SCREW PTB 3X8(NI)	1	PC.
068			SE023PC020	EVA 25X18X5.5	1	PC.
069			SE00000403	DC RUBBER COVER	1	PC.
070			SE00000404	SCREW PTHE 3X14(CR)	1	PC.
071			SE021PC030	BATTERY COVER LOCKER	1	PC.
072			SE00000406	SPEAKER PACKING	1	PC.
073			SE00000407	SPEAKER(R)	1	PC.
074			SE00000408	SPEAKER PANEL ASS'Y	1	PC.
075			SE024J9040	PACKING	4	PC.
076			SE9076146A	HEX SCREW M6X14	4	PC.
077			SE9076146A	HEX SCREW M6X14	4	PC.
078			SE024J9040	PACKING	4	PC.
079			SE00000408	SPEAKER PANEL ASS'Y	1	PC.
080			SE00000438	SPEAKER (L)	1	PC.
081			SE00000406	SPEAKER PACKING	1	PC.
082			SE00000416	TERMINAL E (B)	1	PC.
083			SE00000325	SCREW PTB 3X8(NI)	2	PC.
084			SE00000200	TERMINAL C	1	PC.
085			SE00000325	SCREW PTB 3X8(NI)	2	PC.
086			SE00000423	PCB B AUX IN 2 ASS'Y	1	PC.
087			SE00000193	SCREW 3X10	2	PC.
088			SE00000199	SILICON RUBBER WASHER	1	PC.
089			SE00000325	SCREW PTB 3X8(NI)	1	PC.
090			SE00000199	SILICON RUBBER WASHER	1	PC.
091			SE00000325	SCREW PTB 3X8(NI)	1	PC.
092			SE00000422	SPEAKER HOLDER	1	PC.
093			SE00000430	SWITCH KNOB	1	PC.
094			SE00000488	PCB D BATTERY SWITCH ASS'Y	1	PC.
095			SE00000422	SPEAKER HOLDER	1	PC.
096			SE00000325	SCREW PTB 3X8(NI)	2	PC.
097			SE00000433	PCB B DC JACK ASS'Y	1	PC.
098			SE09090011	SCREW 1.7	2	PC.
099			SE00000435	DC JACK HOLDER	1	PC.
100			SE00000473	TERMINAL 10.8V ASSY 011 WA1	1	PC.
101			SE00000325	SCREW PTB 3X8(NI)	1	PC.
102			SE00000195	W/TIES 100MM	3	PC.
103			SE024PC040	PACKING	1	PC.

ACCESSORIES

- Visit www.makita.ca for more accessories information -

A01	1		SE00000104	AC ADAPTER	1	PC.
	2		SE00000458	AC ADAPTER	1	PC.
A02			----	7.2V - 18V LI-ION BATTERIES		
A03			----	CHARGERS		