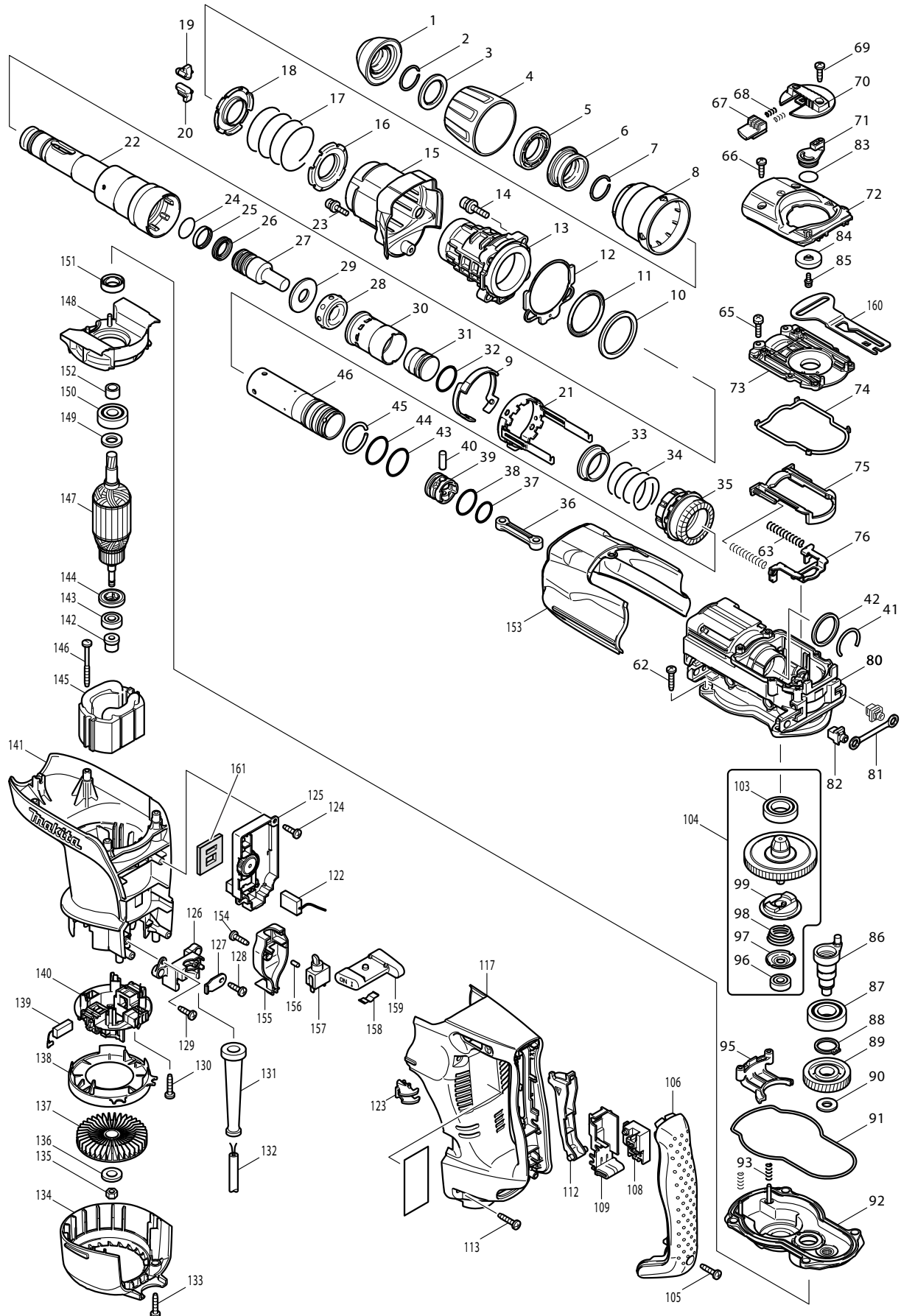




10-2007
HR4001C
SDS-MAX 1-9/16" ROTARY HAMMER



Item#	Part#	Description	Qty	Unit
1	286272-3	TOOL HOLDER CAP	1	PC.
2	231984-3	RING SPRING 25	1	PC.
3	267272-2	FLAT WASHER 28	1	PC.
4	419015-0	CHUCK COVER	1	PC.
5	419002-9	SPACER	1	PC.
6	324548-1	CHUCK RING	1	PC.
7	231984-3	RING SPRING 25	1	PC.
8	419016-8	RELEASE COVER	1	PC.
9	419017-6	LOCK SLEEVE GUIDE	1	PC.
10	267298-4	FLAT WASHER 45	1	PC.
11	262116-1	URETHAN RING 45	1	PC.
12	421911-0	SEAL SHEET	1	PC.
13	154621-1	BARREL COM	1	PC.
14	922353-6	HEX. SOCKET HEAD BOLT M6X30	4	PC.
15	154624-5	BARREL COVER COM	1	PC.
16	345579-7	SPRING GUIDE	1	PC.
17	233431-0	COMPRESSION SPRING 48	1	PC.
18	345579-7	SPRING GUIDE	1	PC.
19	310161-1	TOOL RETAINER	1	PC.
20	310161-1	TOOL RETAINER	1	PC.
21	165407-8	LOCK SLEEVE	1	PC.
22	324542-3	TOOL HOLDER	1	PC.
23	922128-3	HEX. SOCKET HEAD BOLT M4X16	1	PC.
24	213317-4	O RING 20	1	PC.
25	213392-0	FLUORIDE RING 25	1	PC.
26	213281-9	X-RING 18	1	PC.
27	324569-3	IMPACT BOLT	1	PC.
28	421901-3	RUBBER RING 17	1	PC.
29	324573-2	RING 17	1	PC.
30	419003-7	SLIDE SLEEVE	1	PC.
31	324571-6	STRIKER	1	PC.
32	213962-5	O RING 22	1	PC.
33	331709-6	RING 33	1	PC.
34	233448-3	COMPRESSION SPRING 37	1	PC.
35	227486-5	STRAIGHT BEVEL GEAR 25	1	PC.
36	419005-3	CONNECTING ROD	1	PC.
37	213379-2	O RING 21	1	PC.
38	213962-5	O RING 22	1	PC.
39	419004-5	PISTON	1	PC.
40	256197-5	PIN 7	1	PC.
41	233937-8	RING SPRING 31	1	PC.
42	257268-1	RING 33	1	PC.
43	213406-5	O RING 30	1	PC.
44	213406-5	O RING 30	1	PC.
45	233935-2	RING SPRING 32	1	PC.
46	324570-8	CYLINDER 28.5	1	PC.
62	266041-8	TAPPING SCREW 5X25	4	PC.

Item#	Part#	Description	Qty	Unit
63	233432-8	COMPRESSION SPRING 7	2	PC.
65	911133-5	P.H. SCREW M4X18	6	PC.
66	266192-7	TAPPING SCREW 4X14	2	PC.
67	419009-5	LOCK BUTTON	1	PC.
68	233436-0	COMPRESSION SPRING 3	2	PC.
69	266192-7	TAPPING SCREW 4X14	1	PC.
70	419020-7	CHANGE LEVER	1	PC.
71	419007-9	CRANK LEVER	1	PC.
72	317925-4	CRANK CAP COVER	1	PC.
73	419030-4	CRANK CAP	1	PC.
74	421908-9	SEAL RING	1	PC.
75	419019-2	LINK PLATE GUIDE	1	PC.
76	345582-8	LINK PLATE	1	PC.
80	154625-3	CRANK HOUSING COM (INCLUDES 214656-5 - PLANE BEARING 51 & 324568-5 - RING 40)	1	PC.
81	423345-3	CUSHION PLATE	1	PC.
82	419008-7	FIX GUIDE	2	PC.
83	213262-3	O RING 18	1	PC.
84	419006-1	LINK LEVER	1	PC.
85	911511-9	P.H. SCREW M4X10	1	PC.
86	324550-4	CRANK SHAFT	1	PC.
87	211332-2	BALL BEARING 6004LLU	1	PC.
88	961060-6	RETAINING RING S-20	1	PC.
89	226605-0	HELICAL GEAR 38	1	PC.
90	253180-3	FLAT WASHER 10	1	PC.
91	421907-1	SEAL RING	1	PC.
92	154623-7	GEAR HOUSING COM (INCLUDES 212075-9 - NEEDLE ROLLER BEARING 1010 & 2X268136-3 - PIN 4)	1	PC.
93	233433-6	COMPRESSION SPRING 5	2	PC.
95	419018-4	CHANGE PLATE	1	PC.
96	210005-4	BALL BEARING 608DDW	1	PC.
97	345581-0	CUP WASHER 8	1	PC.
98	233936-0	CONICAL COMPRESSION SPRING19-27	1	PC.
99	324549-9	DRIVING FLANGE	1	PC.
103	211323-3	BALL BEARING 6904LLU	1	PC.
104	135086-6	TORQUE LIMITER ASSY (INCLUDES ITEMS 96 - 103)	1	PC.
105	265995-6	TAPPING SCREW 4X18	1	PC.
106	419036-2	HANDLE COVER	1	PC.
108	650567-4	SWITCH TG73B-1	1	PC.
109	154626-1	SWITCH HOLDER COM (INCLUDES 423344-5 - SPONGE SEAT)	1	PC.
112	419028-1	SWITCH LEVER	1	PC.
113	266041-8	TAPPING SCREW 5X25	4	PC.
117	419039-6	HANDLE	1	PC.
122	638407-6	LEAD UNIT	1	PC.
123	419010-0	LENS	1	PC.
124	266192-7	TAPPING SCREW 4X14	1	PC.
125	631656-4	CONTROLLER	1	PC.

Item#	Part#	Description	Qty	Unit
126	419024-9	CORD CLAMP BASE	1	PC.
127	687169-3	STRAIN RELIEF	1	PC.
128	266192-7	TAPPING SCREW 4X14	1	PC.
129	266192-7	TAPPING SCREW 4X14	1	PC.
130	265995-6	TAPPING SCREW 4X18	4	PC.
131	682560-0	CORD GUARD 10	1	PC.
132	664276-9	POWER SUPPLY CORD AWG#16-2-5.0	1	PC.
133	265995-6	TAPPING SCREW 4X18	2	PC.
134	419032-0	REAR COVER	1	PC.
135	931303-0	HEX. NUT M6	1	PC.
136	253047-5	FLAT WASHER 6	1	PC.
137	241876-8	FAN 76	1	PC.
138	419022-3	FAN GUIDE	1	PC.
139	194160-9	CARBON BRUSH CB-350	1	PC.
140	638393-1	BRUSH HOLDER UNIT	1	PC.
141	154619-8	MOTOR HOUSING COM (INCLUDES 345650-7 - WASHER PLATE)	1	PC.
142	324390-0	SHOULDER SLEEVE 6	1	PC.
143	210005-4	BALL BEARING 608DDW	1	PC.
144	681650-6	INSULATION WASHER	1	PC.
145	625736-6	FIELD	1	PC.
146	266095-5	TAPPING SCREW 5X55	2	PC.
147	513631-1	ARMATURE ASSY (INCLUDES ITEMS 143 & 144)	1	PC.
148	419021-5	BAFFLE PLATE	1	PC.
149	253084-9	FLAT WASHER 12	1	PC.
150	211137-0	BALL BEARING 6201LLU	1	PC.
151	213231-4	OIL SEAL 15	1	PC.
152	331596-3	SLEEVE 12	1	PC.
153	419034-6	CRANK HOUSING COVER	1	PC.
154	266192-7	TAPPING SCREW 4X14	1	PC.
155	419026-5	SWITCH BOX	1	PC.
156	263027-3	RUBBER PIN 4	1	PC.
157	651418-4	SWITCH ST115A-40	1	PC.
158	232209-8	LEAF SPRING	1	PC.
159	154635-0	SLIDE LEVER COM (INCLUDES 257754-2 - SLEEVE 4 & 265138-9 - FLAT FILLISTER HD.PIN 4)	1	PC.
160	419027-3	CONTROL PLATE	1	PC.
161	421939-8	SPONGE SHEET	1	PC.

ACCESSORIES

A01	134890-0	SIDE HANDLE 68 ASSY (D SHAPED)(INCLUDES 151769-0 - SIDE HANDLE 68 COM., 252640-2 - WING NUT M8, 265439-6 - HEX. BOLT M8X150, 417002-3 - SIDE HANDLE CAM & 417003-1 - SIDE HANDLE)	1	PC.
A02	134803-1	GRIP 36 ASSY (INCLUDES 152554-4 - GRIP 36 COM., 265701-9 - SCREW M6X14, 266163-4 - CUP SQUARE NECK BOLT M8X80, 321248-4 - DEPTH GAUGE, 344491-8 - GRIP SPRING 68, 344492-6 - PLATE,	1	PC.

Item#	Part#	Description	Qty	Unit
		416299-1 - SIDE GRIP BASE 68 & 931302-2 - HEX. NUT M6)		
A03	154678-2	PLASTIC CARRYING CASE COM (INCLUDES 2X416401-6 - LATCH & 816841-2 - INDICATION LABEL)	1	PC.
A04	181573-3	GREASE VESSEL	1	PC.
A05	443122-7	CLOTH		PC.
A06	188049-1	HAMMER SERVICE KIT (INCLUDES 2/181490-7(n/a, USE A-90582)HAMMER GREASE 30G, 1/286272-3 TOOL HOLDER CAP, 1/194160-9 CARBON BRUSH CB-350, 1/213317-4 O RING 20, 1/213392-0 FLUORIDE RING 25, 1/213281-9 X-RING 18, 2/213962-5 O RING 22)		